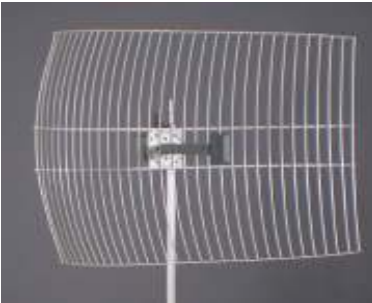




Bullet M2™

Wireless Rectangular Grid Solution



RF Engineering manufactures 4 antenna solutions and feed systems for the Ubiquiti **Bullet M2™** radio at the 2.4Ghz frequency range.

Choose from our 15dBi, 19dBi, 21dBi, and 24dBi rectangular grid systems for superior gain performance and maximum wind loading capacity at excellent cost effectiveness.

Grid Performance Data:

Model:	Frequency:	Gain (dBi)
PG-2415-B	2.4Ghz	15.2dBi
PG-2419-B	2.4Ghz	19.3dBi
PG-2421-B	2.4Ghz	21.5dBi
PG-2424-B	2.4Ghz	24dBi

Manufactured by: RF Engineering Technical Support: Call 1.269.365.5217
sales@rfeq.com